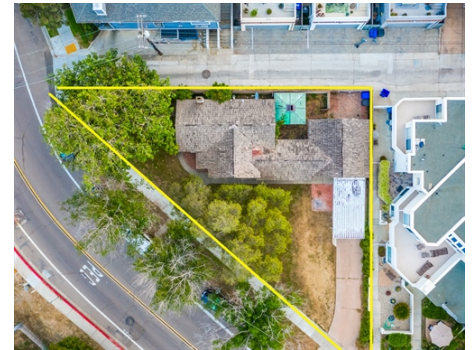


Development Opportunity



\$ 1,600,000



- » Beds: 2 | Baths: 1 Full
- » MLS #: 200021752
- » Single Family | 1,112 ft² | Lot: 5,500 ft²
- » Highly Desired Crown Point Drive
- » Unobstructable Views of Downtown & Mission Bay
- » More Info: 3810CrownPoint.com



Brian J. Lewis
(619) 300-5032 (Cell)
brian@thinkbrian.com
<http://WWW.THINKBRIAN.COM>

BRIAN J. LEWIS REALTOR®
619.300.5032 / THINKBRIAN.COM
DRE# 01440201

Location - Location - Location

Probate Sale - Development Opportunity - Existing fixer being sold with plans by award winning architect Mark Christopher for an amazing home located on Highly Sought after Crown Point Drive in Beautiful Pacific Beach. Drop dead unobstructed forever views from this amazing corner lot location. This is the opportunity you've been waiting for. Homes and Opportunities for sale on this street of "Forever Views" are rare! Existing Fixer is on 1440 Sq Ft 2 Bedrooms 1

